

TSUNAMI Project

"Seasonal prediction of Tropical Cyclones"

- 2 year project



BENFIELD GREIG
HAZARD
RESEARCH CENTRE



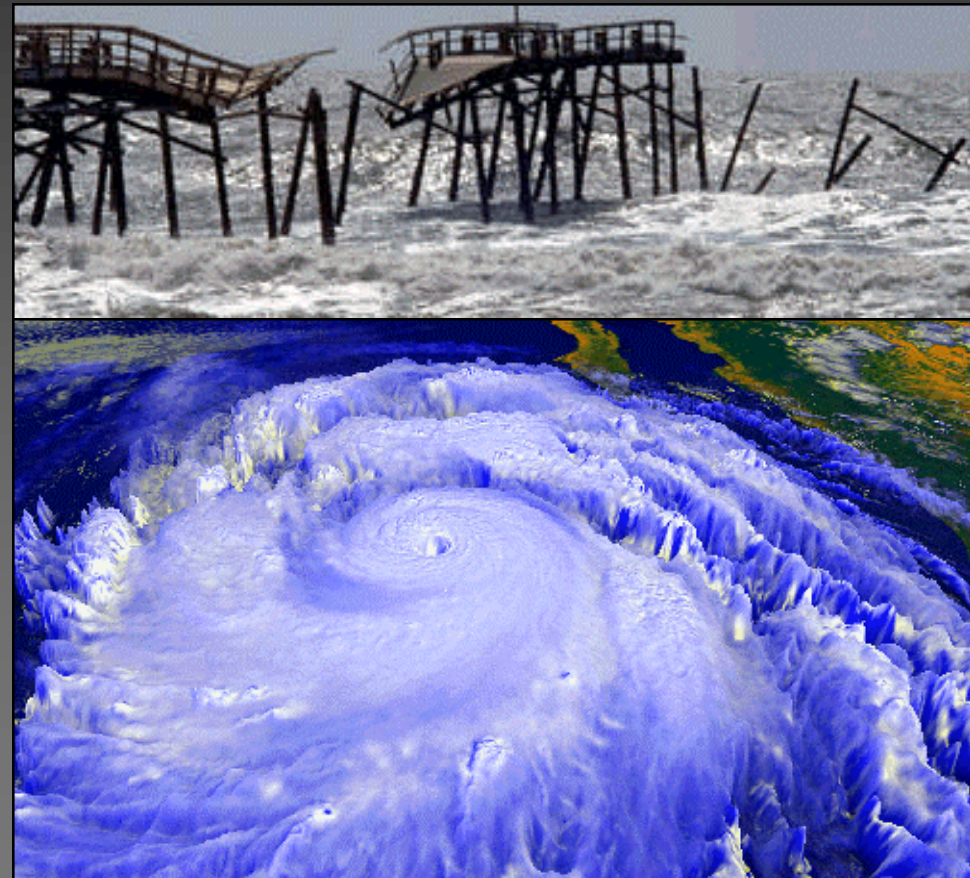
The Met. Office

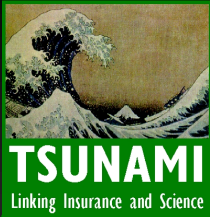


TSUNAMI
Linking Insurance and Science



The University of Reading

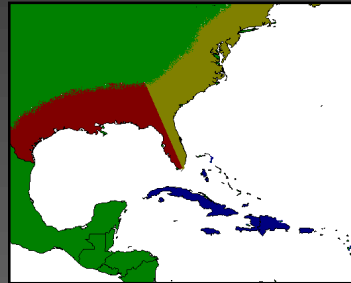




Project Definition

Establish a methodology

- Using Statistical & dynamical models
- Increase skill level
- Useful lead time
- Three oceanic basins



Develop seasonal forecasting capability

- Landfalling tropical cyclones
- Frequency & severity
- Spatial results

