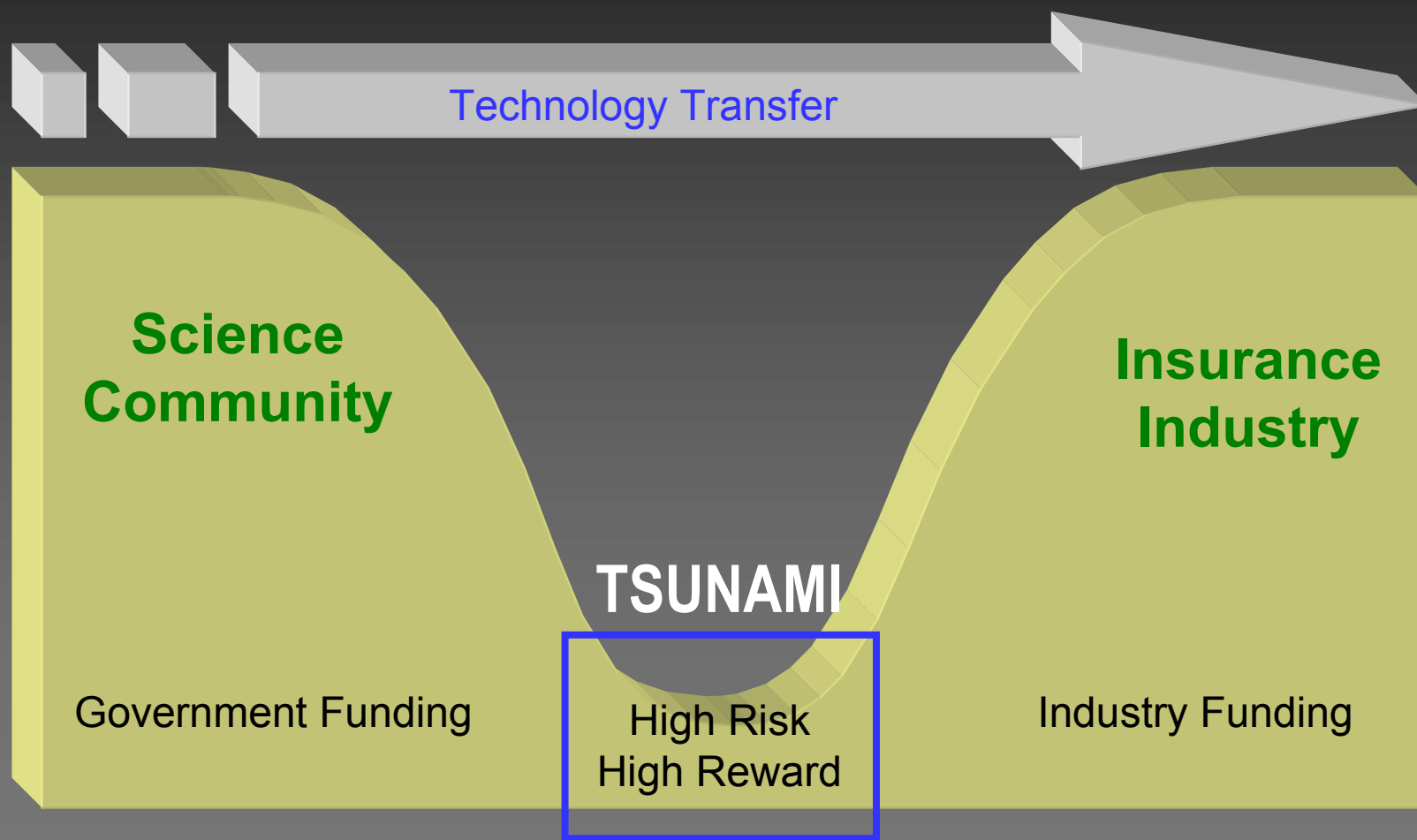
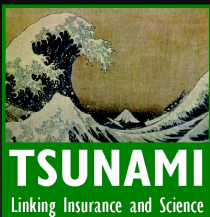
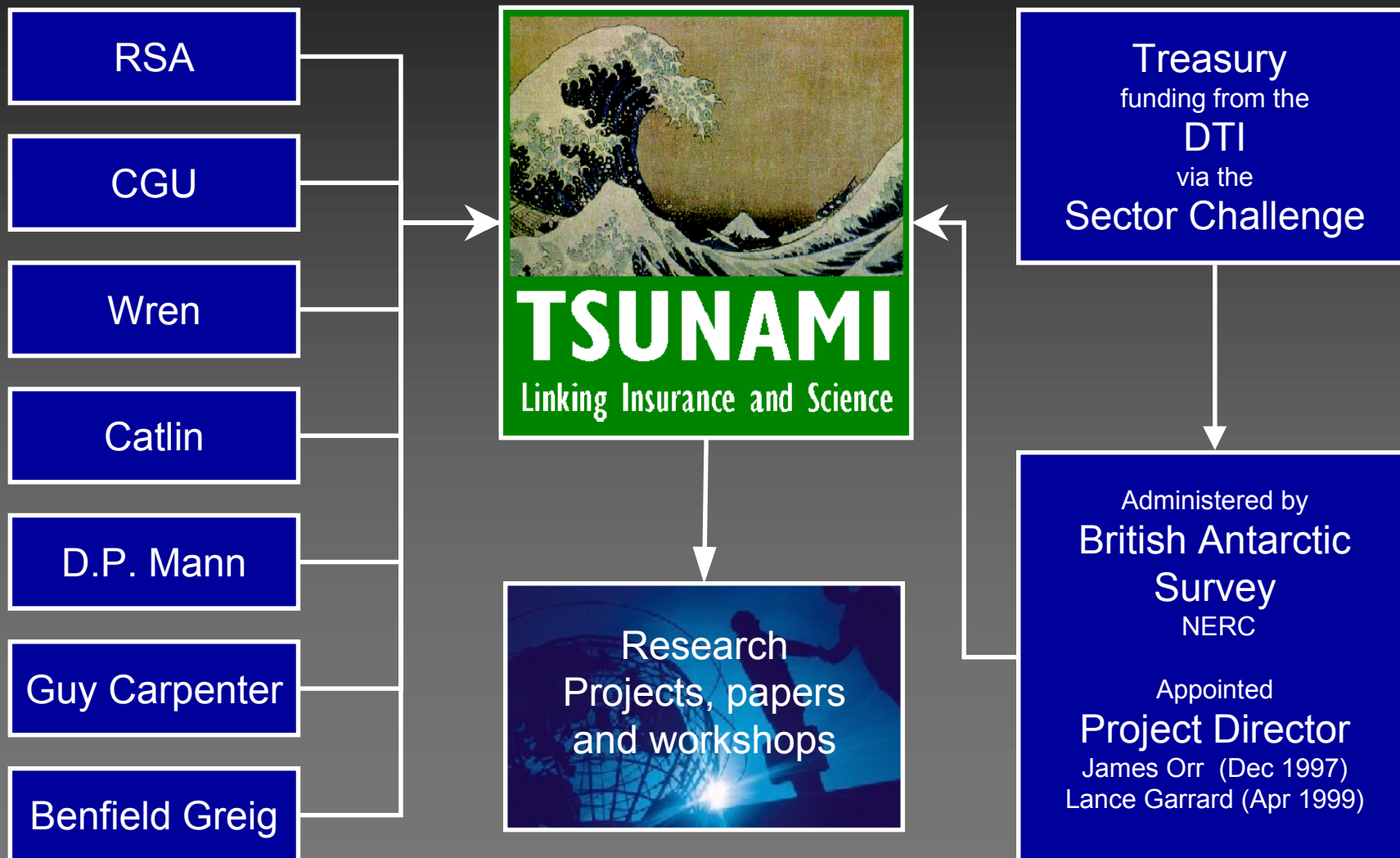


Bridging the Gap





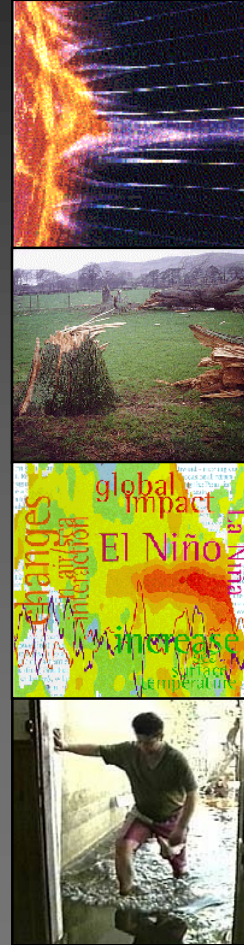
Funding



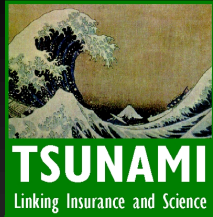
Activities



- El Nino
- Quantitative Risk Assessment
- Y2K
- EV Statistics
- Worldwide Earthquake activity
- TC Forecasting
- Economic Losses



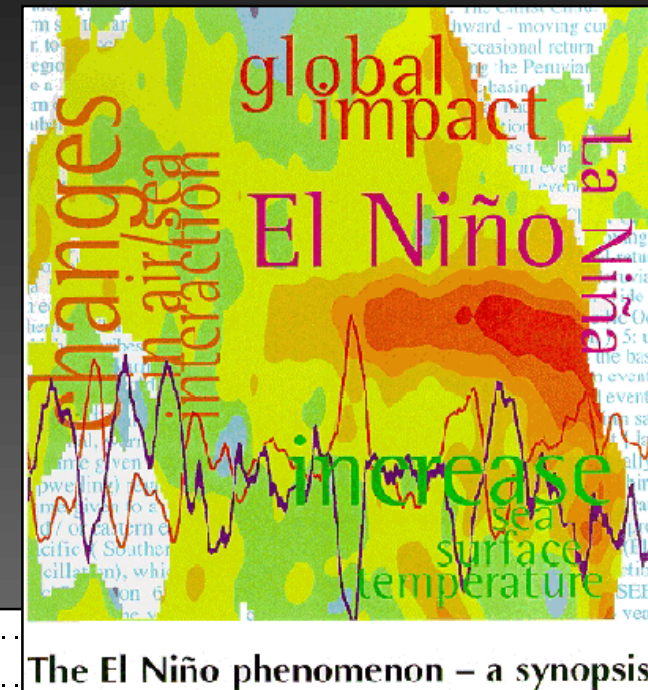
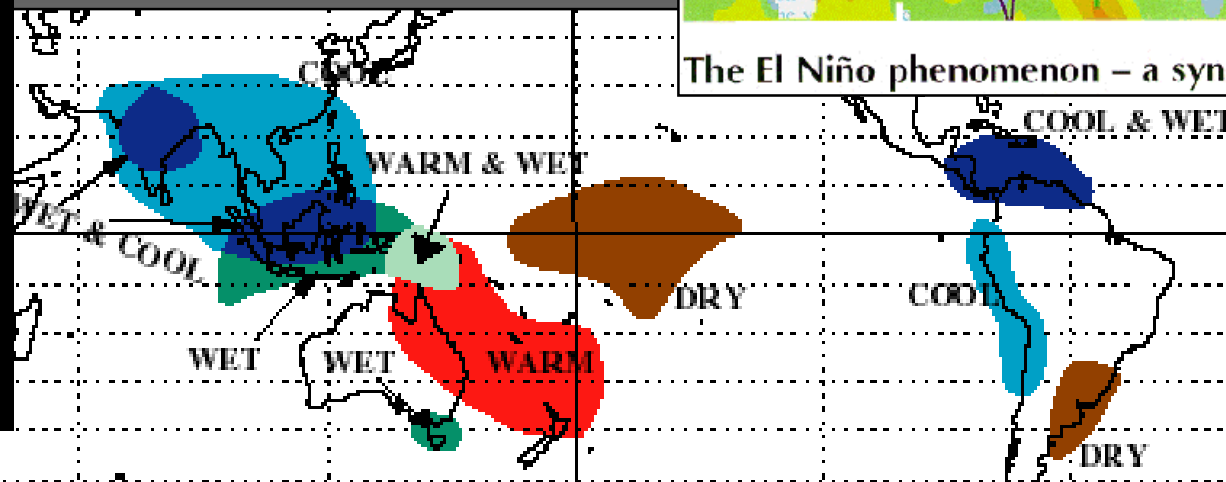
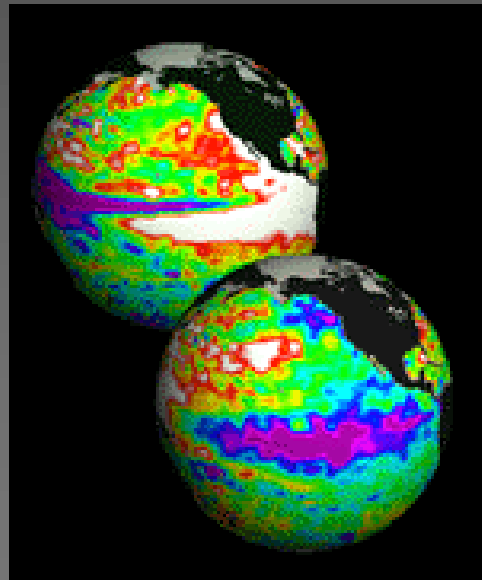
- N.Europe climate
- Flood risk control
- Satellite Risks
- Uninsured losses
- Tsunami Risks
- Communication between Insurance & Academia
- Science Strategy workshop

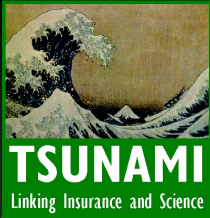


El Niño

Project

- Publish a report on El Niño
- El Niño Workshop

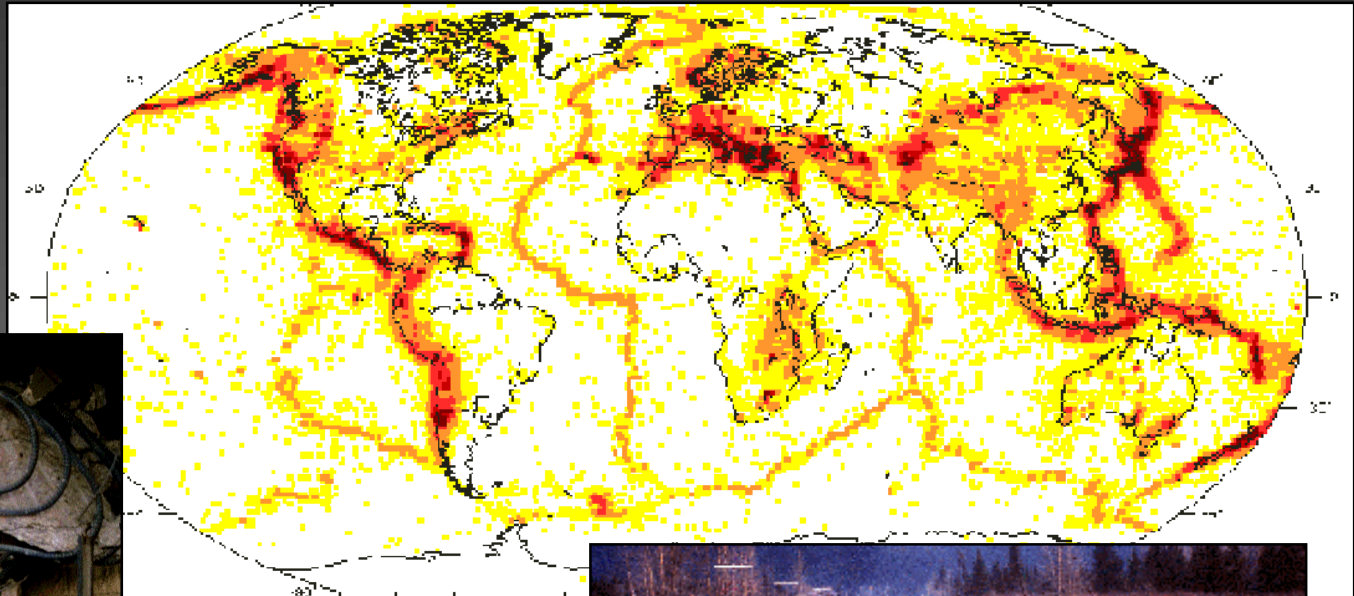


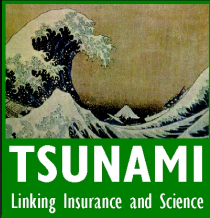


Worldwide EQ Activity Database

Earthquake Hazard Database for 1200 cities

- Frequency
- Severity
- Proximity

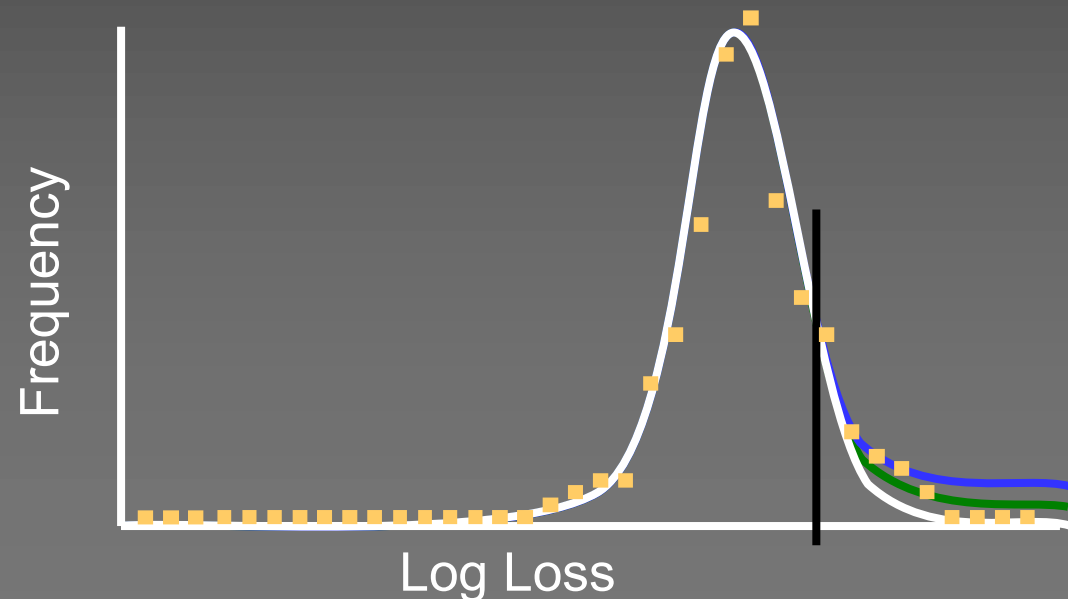
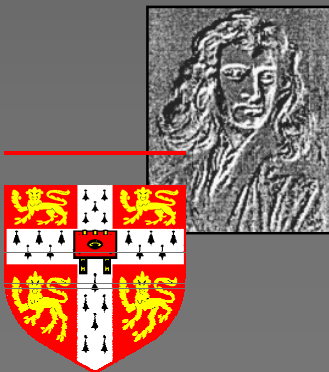




Extreme Value Statistics

New mathematical methods for insurers

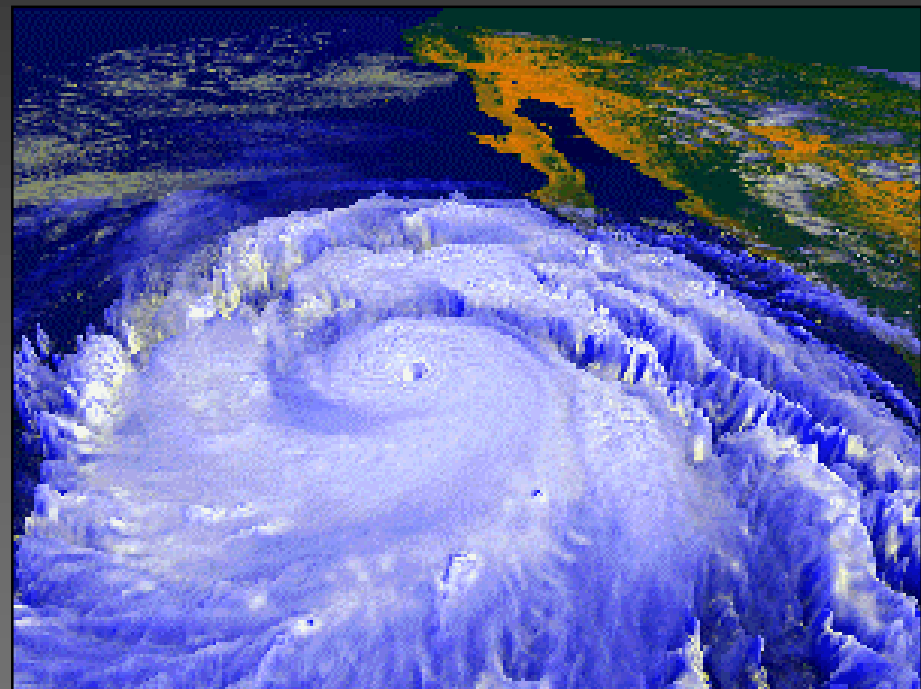
- **Part of a larger program on**
 - non-linear
 - non-stationary signal processing
 - Insurer data
- **Implementation**



Tropical Cyclone Forecasting

Establish a new methodology for

- **The Seasonal prediction**
 - Land-falling
 - 3 Oceanic basins
 - Increased skill & lead-time



BENFIELD GREIG

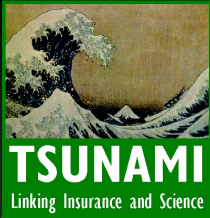
HAZARD

RESEARCH CENTRE



The Met.Office



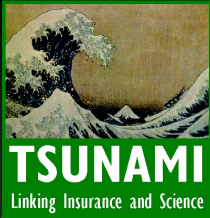


UK Flood Risks

Project Aims

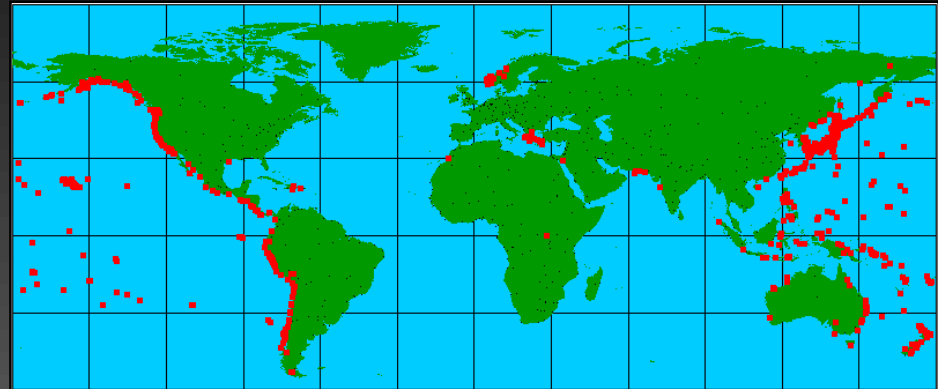
- **Consider “availability & affordability” issues**
 - Review the options & consequences
 - Expert Workshop





Tsunami Risks

- Book
- Seminar
- Hazard map
- Local socio-economic study
- New mathematical analysis



BENFIELD GREIG

HAZARD

RESEARCH CENTRE



COVENTRY
UNIVERSITY

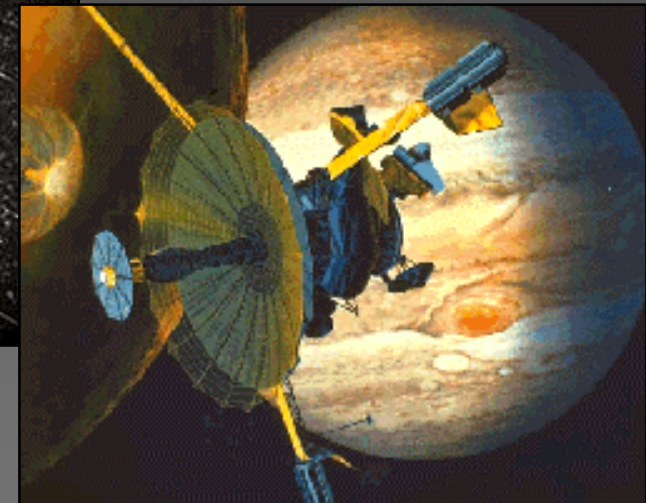
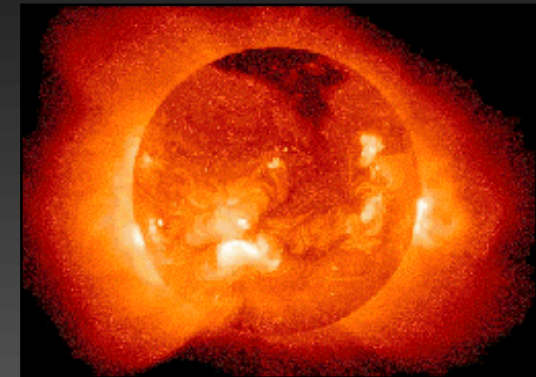
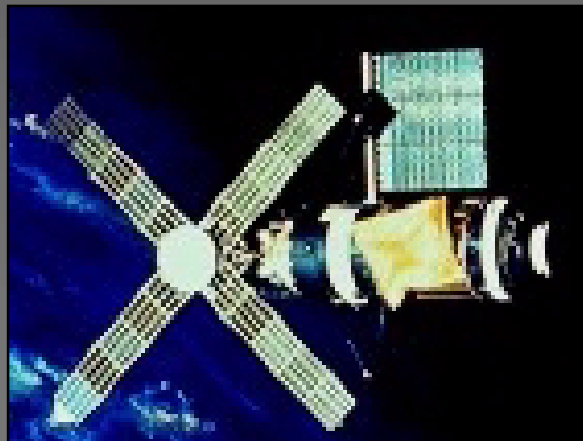


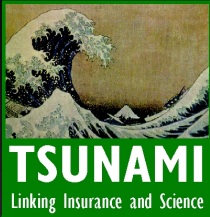
HSE
Health & Safety
Executive

Satellite Risks

Risks to satellites from

- High energy particles
- Magnetic storms
- Meteorite showers
- Space debris



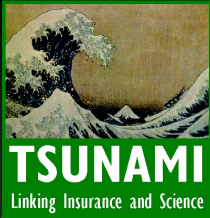


Uninsured Losses

Impact & Opportunities

- **Individuals**
- **Companies**
- **Local governments**
- **Central governments**





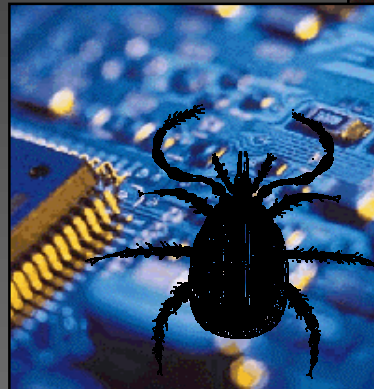
Communication

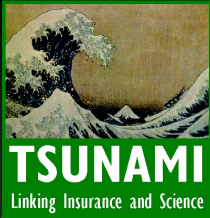
TSUNAMI organise

- **Meetings, workshops, luncheons conferences**
 - Y2K
 - QRA

Planned

- **Communication**
- **Conference at RS**
- **Science Strategy**





The TSUNAMI Initiative

- **An Experiment**

Forcing Change

- **Capabilities**

- **Needs**

- **Translating**

- **Linking**

- **“Soft” issues**

Sponsoring research

... more competitive

